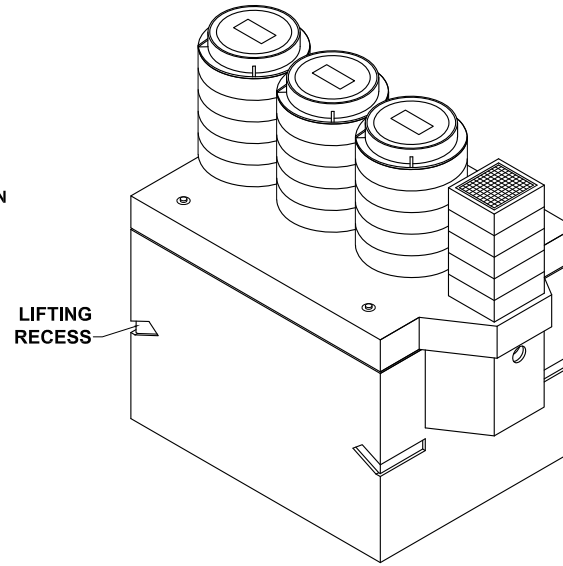
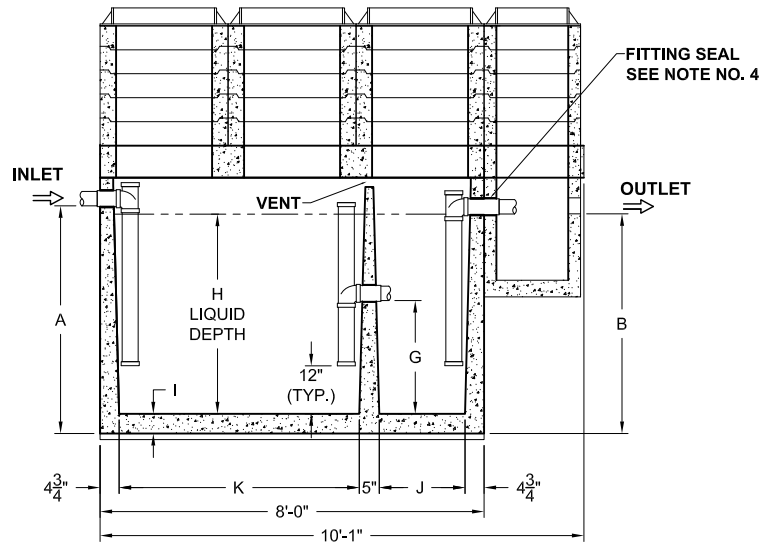


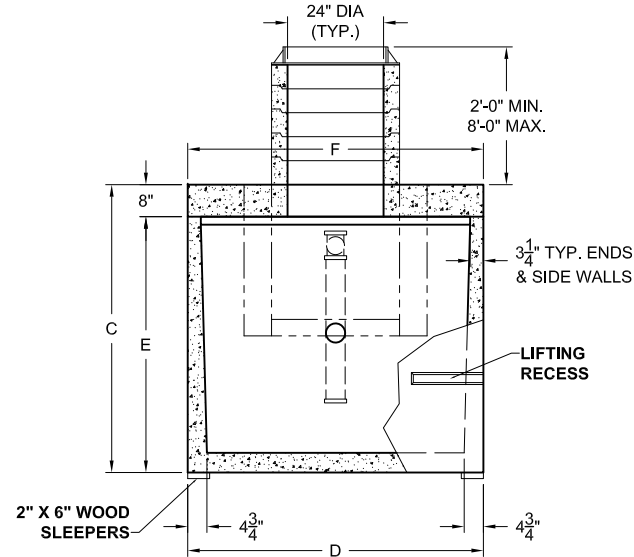
**PLAN VIEW**



**ISOMETRIC VIEW**



**SECTION THRU "A-A"**



**SECTION THRU "B-B"**

ALL DIMENSIONS ARE IN INCHES & WEIGHTS IN LBS - (RISER WT. NOT INCLUDED)													EXCAVATION SPECIFICATIONS			
MODEL	A	B	C	D	E	F	G	H	I	J	K	WEIGHT	LENGTH	WIDTH	BELOW INLET	TANK HEIGHT
PC G-750 / G-HD-1-750	40	38	53	74	45	74	15 3/4	31 1/2	4 1/2	21 1/2	60	13,155	13'-0"	9'-2"	3'-2"	4'-5"
PC G-1000 / G-HD-1-1000	50	48	63	74	55	74	20 3/4	41 1/2	4 1/2	21 1/2	60	14,510	13'-0"	9'-2"	4'-0"	5'-3"
PC G-1250 / G-HD-1-1250	59	57	72	74	64	74	25 1/4	50 1/2	4 1/2	21 1/2	60	15,725	13'-0"	9'-2"	4'-9"	6'-0"
PC G-1500 / G-HD-1-1500	62 1/2	60 1/2	75 1/2	85	67 1/2	85	26 3/4	53 1/2	5	27 1/2	54	18,345	13'-0"	10'-1"	5'-0 1/2"	6'-3 1/2"

**Pro-Cast**  
PRODUCTS INC.  
27417 E. Third St., Highland, CA 92346  
909-793-7602 phone 909-793-1283 fax  
www.procastproducts.com

**PRODUCT NAME:**  
**GREASE INTERCEPTOR**

**DESCRIPTION:**  
750 THRU 1500 GALLONS  
WITH THREE MANHOLES & RISERS

**DESIGN SPECIFICATIONS**

**DESIGN LOAD: H-20 LOADING**

WITH DRY SOIL CONDITIONS (WATER LEVEL BELOW TANK). SUITABLE SUB-BASE BEDDED WITH GRANULAR MATERIAL SHALL BE PREPARED TO HANDLE ANTICIPATED LOADS. FOR COMPLETE DESIGN AND PRODUCT INFORMATION, PLEASE CONTACT PRO-CAST PRODUCTS.

PRO-CAST PRODUCTS RESERVES THE RIGHT TO MAKE CHANGES TO PRODUCT DESIGN AND/OR DIMENSIONS WITHOUT NOTICE. PLEASE CONTACT PRO-CAST PRODUCTS WHENEVER NECESSARY FOR CONFIRMATION OR ADVICE ON PRODUCT DESIGN.

**NOTES:**

1. (NOT USED)
2. REFER TO SPECIFICATION SHEET NOS. S- 251 & S-252
3. REFER TO SPECIFICATION SHEET NO. S-201
4. REFER TO SPECIFICATION SHEET NO. S-250

**SCALE:** 1/4" = 1'-0"

**DRAWN BY:** TPC 12/28/2022

**REVISED BY:** JPL 05/03/2023

**CHECKED BY:**

**DRAWING NO.**

**G-002**